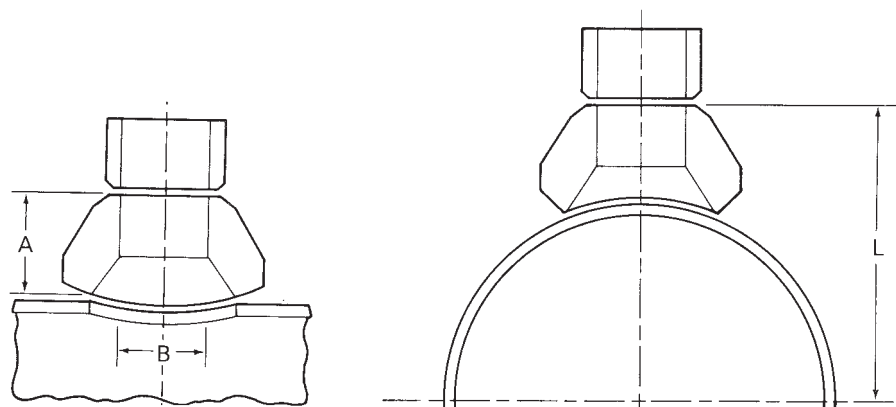


# Butt-Welding Outlets

## Standard and Extra Strong, Schedules 5s and 10s



- Provides a self-reinforced, one piece connection.
- Circular design allows use of automatic burning equipment.
- Requires less weld material while restoring 100% pipe or header strength.
- Holes can be cut in the run after welding the outlet to further reduce distortion.
- Available in straight, 90°, 45°, lateral and elbow configurations.
- Manufactured to conform to the design requirements of ANSI B 16.9 and Pressure Piping Code ANSI B 31.1.
- Can be manufactured to non-standard dimensions or in alternate alloys and are available in full and reducing

Outlet Nominal Pipe Size	Standard			Extra Strong			Schedules			
	A	B	Weight	A	B	Weight	5s B	10s B	Weight	
1/8	5/8	.269	.08	5/8	.215	.10	5/8	.307	.06	
1/4	5/8	.364	.08	5/8	.302	.10	5/8	.410	.06	
3/8	3/4	.493	.15	3/4	.423	.15	3/4	.545	.11	
1/2	3/4	.622	.18	3/4	.546	.20	3/4	.710	.16	
3/4	7/8	.824	.25	7/8	.742	.31	7/8	.920	.20	
1	1 1/16	1.044	.50	1 1/16	.952	.47	1 1/16	1.180	1.092	.47
1 1/4	1 1/4	1.380	.80	1 1/4	1.278	.90	1 1/4	1.530	1.442	.59
1 1/2	1 5/16	1.610	1.00	1 5/16	1.500	1.10	1 5/16	1.770	1.682	.66
2	1 1/2	2.067	1.75	1 1/2	1.939	1.75	1 1/2	2.245	2.157	.97
2 1/2	1 5/8	2.469	2.31	1 5/8	2.323	2.63	1 5/8	2.709	2.635	1.61
3	1 3/4	3.068	3.36	1 3/4	2.900	3.82	1 3/4	3.334	3.26	1.90
3 1/2	1 7/8	3.548	4.45	1 7/8	3.364	4.96	1 7/8	3.834	3.760	2.55
4	2	4.026	5.89	2	3.826	6.17	2	4.334	4.260	3.05
5	2 1/4	5.047	6.39	2 1/4	4.813	9.59	2 1/4	5.345	5.295	5.50
6	2 3/8	6.065	12.2	2 3/8	5.761	17.6	2 3/8	6.407	6.357	6.42
8	2 3/4	7.981	21.5	2 3/4	7.625	34.8	2 3/4	8.407	8.329	11.3
10	3 1/16	10.02	37.0	3 1/16	9.750	46.2	3 1/16	10.482	10.420	19.0
12	3 3/8	12.00	42.9	3 3/8	11.75	67.0	3 3/8	12.438	12.390	26.7
14	3 1/2	13.25	62.2	3 1/2	13.00	75.3	3 1/2	13.688	13.624	33.6
16	3 11/16	5.25	81.7	3 11/16	15.00	102	3 11/16	15.670	15.624	42.0
18	3 13/16	7.25	103	3 13/16	17.00	130	3 13/16	17.670	17.624	50.8
20	4	19.25	130	4	19.00	166	4	19.624	19.564	70.8
24	4 9/16	23.25	195	4 9/16	23.00	262	4 9/16	23.564	23.500	109
26	4 11/16	25.25	231	4 11/16	25.00	316	4 11/16	29.500	29.376	173
30	5 3/8	29.25	335							
36	5 3/8	35.25	478							
48	5 13/16	47.25	1103							

Dimensions are in inches. Weights are in pounds.  
See pages 8 and 9 for L dimension.