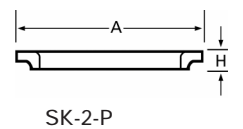
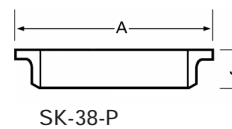
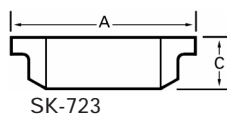
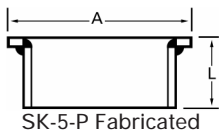
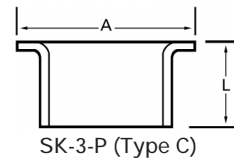
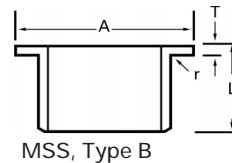
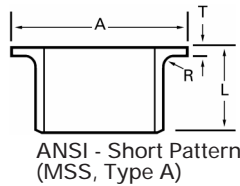
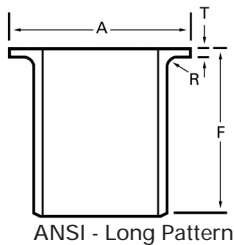


# Stainless Steel Butt Welding Stub Ends

## A 403 Lap-Joint Stub Ends (Compared With Alaskan Stub Ends)



- Lap-joint stub ends specified in ASTM A 403 are normally available in NPS sizes only, conforming to either ANSI MSS Type A or Type B dimensions.
- Dimensions are specified per ANSI B16.9 or MSS SP-43. These stub ends are normally used with “annealed” pipe and fittings.
- The illustrations above are included to show some alternatives to A 403 lap-joint stub ends.

Nominal Pipe Size	Outside Diameter	Lap Diameter A	F	L	Fillet R	Fillet r	SK 723 C	SK38-P J	SK 2-P H
1/2	.840	1 3/8	3	2	1/8	1/32			
3/4	1.05	1 11/16	3	2	1/8	1/32			
1	1.31	2	4	2	1/8	1/32			
1 1/4	1.66	2 1/2	4	2	3/16	1/32			
1 1/2	1.90	2 7/8	4	2	1/4	1/32		1 1/4	5/8
2	2 3/8	3 5/8	6	2 1/2	5/16	1/32	1 7/8	1 1/4	5/8
2 1/2	2 7/8	4 1/8	6	2 1/2	5/16	1/32		1 1/4	3/4
3	3 1/2	5	6	2 1/2	3/8	1/32	2	1 1/4	3/4
4	4 1/2	6 3/16	6	3	7/16	1/32	2 1/8	1 1/4	3/4
5	5 9/16	7 5/16	8	3	7/16	1/16		1 3/8	3/4
6	6 5/8	8 1/2	8	3 1/2	1/2	1/16	2 3/8	1 3/8	3/4
8	8 5/8	10 5/8	8	4	1/2	1/16	2 5/8	1 1/2	3/4
10	10 3/4	12 3/4	10	5	1/2	1/16	2 7/8	1 5/8	7/8
12	12 3/4	15	10	6	1/2	1/16	3 1/8	1 5/8	7/8
	14	16 1/4	12	6	1/2	1/16	6	1 3/4	7/8
	16	18 1/2	12	6	1/2	1/16		1 3/4	7/8
	18	21	12	6	1/2	1/16		2	7/8
	20	23	12	6	1/2	1/16		2	7/8
	22	25 1/4	12	6	1/2	1/16		2	
	24	27 1/4	12	6	1/2	1/16		2	7/8
	28	31 1/2	12	6	1/2	1/16			
	30	34 1/8	12	6	1/2	1/16		2	
	32	35 3/4	12	6	1/2	1/16			
	34	38 5/8	12	6	1/2	1/16			
	36	40 3/8	12	6	1/2	1/16		2	
	40	45 3/8	12	6	1/2	1/16			
	42	47 1/8	12	6	1/2	1/16			
	48	53 3/4	12	6	1/2	1/16			

T: Minimum lap thickness is equal to the nominal pipe wall thickness.  
 Dimensions are in inches.