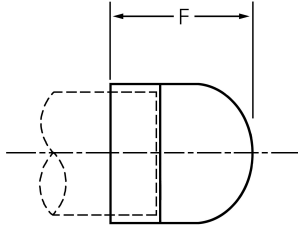


## Copper-Nickel Belled End Fittings

### Caps- NAVSEA 802-5959353 App.B, MSS SP-119



- UNS Designation Numbers: 90-10 (UNS C70600) and 70-30 (UNS C71500).
- Nominal Chemicals 90-10: Copper 88.6%, Nickel 10.0%, Iron 1.4%.
- Nominal Chemicals 70-30: Copper 69.5%, Nickel 30.0%, Iron 0.5%.

Nominal Pipe Size	OD	Minimum Wall	Cap F	Weight	NAVSEA/MSS	
					90-10 Part Number	70-30 Part Number
1/4	.540	.065	0.85	.3	483046	483135
3/8	.675	.065	1.00	.3	483054	483143
1/2	.840	.065	1.19	.35	483062	483151
3/4	1.050	.065	1.19	.4	483070	483169
1	1.315	.065	1.44	.4	483088	483177
1 1/4	1.66	.072	1.44	.5	483096	483185
1 1/2	1.90	.072	1.44	.6	483115	483020
2	2.375	.083	1.44	.6	483101	470661
2 1/2	2.875	.083	1.44	.7	480323	483038
3	3.50	.095	1.90	.95	477338	483193
3 1/2*	4.00	.095	2.41	1	496887	
4	4.50	.109	2.41	2	474356	483208
5	5.563	.125	2.91	3	483119	483216
6	6.625	.134	3.39	5	470580	483224
8	8.625	.151	3.94	9	467341	483232
10	10.75	.187	4.94	19	470598	483240
12	12.75	.250	5.93	32	483127	483258

Dimension F is the end to end of the fitting.

Dimensions are in inches.

Sizes not shown may be available upon request.

\*3 1/2 size is not included in NAVSEA/MSS, dimensions per Alaskan standards.