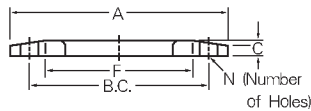
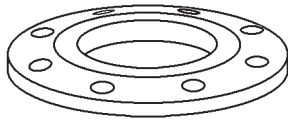


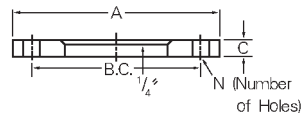
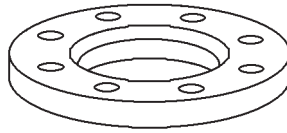
# Steel Backing Flanges

## Steel Backing Flanges

SK-39



SK-40



- SK-39 flanges are economical light-weight steel backing flanges for use with slip-on type stub ends.
- SK-40 flanges are designed for situations where a standard cast steel backing flange cannot be used.

Size	# of Holes	OD A	Hole Size	Bolt Circle	SK-39 C	SK-39 Part Number	SK-39-SO Part Number	SK-40 C	SK-40 Part Number	SK-40-SO Part Number
1/2				2 3/8		106521				
3/4				2 3/4		106547				
1	4	4 1/4	5/8	3 1/8	3/8	106563			472223	
1 1/4	4	4 5/8	5/8	3 1/2	3/8	106589				
1 1/2	4	5	5/8	3 7/8	1/2	106610			109600	
2	4	6	3/4	4 3/4	5/8	106602	106775	1/2	109626	404393
2 1/2	4	7	3/4	5 1/2	5/8	106636	106759	1/2	109642	
3	4	7 1/2	3/4	6	5/8	106652	106814	1/2	109668	404408
4	8	9	3/4	7 1/2	5/8	106678	106791	1/2	109684	404416
5	8	10	7/8	8 1/2	3/4	106686	106830	1/2	257631	
6	8	11	7/8	9 1/2	3/4	106709	106856	5/8	124642	404424
8	8	13 1/2	7/8	11 3/4	3/4	106717	106872	5/8	124587	404432
10	12	16	1	14 1/4	7/8	106725	106898	5/8	124626	404440
12	12	19	1	17	7/8	106741	106911	3/4	124668	404458
14	12	21	1 1/8	18 3/4	1	106204	106937	3/4	109228	402715
16	16	23 1/2	1 1/8	21 1/4	1	106220	106953	3/4	109260	402731
18	16	25	1 1/4	22 3/4	1 1/8	106246	106979	3/4	109244	402749
20	20	27 1/2	1 1/4	25	1 1/8	106262	106995	3/4	109309	402757
24	20	32	1 3/8	29 1/2	1 1/8	106288	107014	3/4	109325	402765
30	28	38 3/4	1 3/8	36		436023	579928	1	109341	
36	32	46	1 5/8	42 3/4		615245	581103	1		
42	36	53	1 5/8	49 1/2			612970	1 1/8		

Dimensions are in inches. All weights are approximate.  
 Sizes not shown may be available upon request.