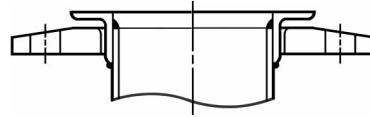
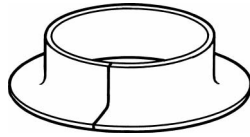
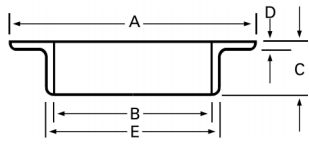
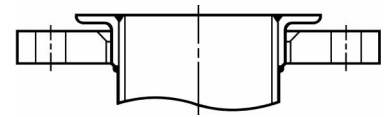


## SK-36-SO and SK-36-PSO Stainless Steel Slip-On Angle Face Rings



Recommended welding configuration allowing maximum length adjustment. As shown with Alaskan SK-39-SO or SK-39-PSO backing flanges.



Recommended welding configuration when interior finish is critical. As shown with Alaskan SK-70-SO or SK-70-PSO backing flanges.

- Designed to slip-on and weld to “as welded” pipe, tube and fittings, they provide for length adjustment and ease of fit-up prior to welding.
- Rolled and welded using ASTM A 276 angle or ASTM A 240 plate.
- Available in Types 304L, 316L and 317L stainless steel.
- Can be supplied in non-standard sizes.
- Alaskan SK-36-SO slip-on angle face rings are normally used with Alaskan SK-39-SO steel backing flanges.
- Alaskan SK-36-PSO slip-on angle face rings are normally used with Alaskan SK-39-PSO steel backing flanges.

### SK-36-SO

Made to Fit OD Tube Size Diameters

Tube OD	3	4	6	8	10	12	14	16	18	20	22	24	28	30	32	36	42	48
A (Lap Dia.)	4 <sup>9</sup> / <sub>16</sub>	5 <sup>9</sup> / <sub>16</sub>	8 <sup>1</sup> / <sub>16</sub>	10 <sup>1</sup> / <sub>16</sub>	12 <sup>1</sup> / <sub>16</sub>	15 <sup>1</sup> / <sub>16</sub>	17 <sup>1</sup> / <sub>16</sub>	19 <sup>1</sup> / <sub>16</sub>	21 <sup>1</sup> / <sub>16</sub>	23 <sup>1</sup> / <sub>16</sub>		28 <sup>1</sup> / <sub>16</sub>		34 <sup>1</sup> / <sub>8</sub>		41 <sup>1</sup> / <sub>8</sub>	47 <sup>3</sup> / <sub>16</sub>	53 <sup>3</sup> / <sub>16</sub>
B (ID Bore)	3 <sup>1</sup> / <sub>16</sub>	4 <sup>1</sup> / <sub>16</sub>	6 <sup>1</sup> / <sub>16</sub>	8 <sup>1</sup> / <sub>16</sub>	10 <sup>1</sup> / <sub>16</sub>	12 <sup>1</sup> / <sub>16</sub>	14 <sup>1</sup> / <sub>16</sub>	16 <sup>1</sup> / <sub>16</sub>	18 <sup>1</sup> / <sub>16</sub>	20 <sup>1</sup> / <sub>16</sub>		24 <sup>1</sup> / <sub>16</sub>		30 <sup>1</sup> / <sub>8</sub>		36 <sup>1</sup> / <sub>8</sub>	42 <sup>3</sup> / <sub>16</sub>	48 <sup>3</sup> / <sub>16</sub>
C (Length)	<sup>3</sup> / <sub>4</sub>	<sup>3</sup> / <sub>4</sub>	1	1	1	1 <sup>1</sup> / <sub>2</sub>	1 <sup>1</sup> / <sub>2</sub>	1 <sup>1</sup> / <sub>2</sub>	1 <sup>1</sup> / <sub>2</sub>	1 <sup>1</sup> / <sub>2</sub>		2		2		2 <sup>1</sup> / <sub>2</sub>	2 <sup>1</sup> / <sub>2</sub>	2 <sup>1</sup> / <sub>2</sub>
D	<sup>1</sup> / <sub>8</sub>	<sup>1</sup> / <sub>8</sub>	<sup>1</sup> / <sub>8</sub>	<sup>1</sup> / <sub>8</sub>	<sup>3</sup> / <sub>16</sub>	<sup>1</sup> / <sub>4</sub>	<sup>1</sup> / <sub>4</sub>	<sup>1</sup> / <sub>4</sub>	<sup>1</sup> / <sub>4</sub>	<sup>1</sup> / <sub>4</sub>		<sup>1</sup> / <sub>4</sub>		<sup>3</sup> / <sub>8</sub>		<sup>3</sup> / <sub>8</sub>	<sup>3</sup> / <sub>8</sub>	<sup>3</sup> / <sub>8</sub>
E	3 <sup>5</sup> / <sub>16</sub>	4 <sup>5</sup> / <sub>16</sub>	6 <sup>5</sup> / <sub>16</sub>	8 <sup>7</sup> / <sub>16</sub>	10 <sup>7</sup> / <sub>16</sub>	12 <sup>9</sup> / <sub>16</sub>	14 <sup>9</sup> / <sub>16</sub>	16 <sup>9</sup> / <sub>16</sub>	18 <sup>9</sup> / <sub>16</sub>	20 <sup>9</sup> / <sub>16</sub>		24 <sup>9</sup> / <sub>16</sub>		30 <sup>7</sup> / <sub>8</sub>		36 <sup>7</sup> / <sub>8</sub>	42 <sup>15</sup> / <sub>16</sub>	48 <sup>15</sup> / <sub>16</sub>
Weights	.75	1.0	1.3	2.5	3.5	8.0	9.5	10.0	11.1	11.5		20.0		35.0		52.0	61.0	70.0

### SK-36-PSO

Made to Fit Nominal Pipe Size Diameters

Nominal Pipe Size	3	4	6	8	10	12	14 thru 48 see SK-36-SO
Pipe OD	3 <sup>1</sup> / <sub>2</sub>	4 <sup>1</sup> / <sub>2</sub>	6 <sup>5</sup> / <sub>8</sub>	8 <sup>5</sup> / <sub>8</sub>	10 <sup>3</sup> / <sub>4</sub>	12 <sup>3</sup> / <sub>4</sub>	
A (Lap Dia.)	5 <sup>1</sup> / <sub>16</sub>	6 <sup>1</sup> / <sub>16</sub>	8 <sup>11</sup> / <sub>16</sub>	10 <sup>11</sup> / <sub>16</sub>	12 <sup>13</sup> / <sub>16</sub>	15 <sup>13</sup> / <sub>16</sub>	
B (ID Bore)	3 <sup>9</sup> / <sub>16</sub>	4 <sup>9</sup> / <sub>16</sub>	6 <sup>11</sup> / <sub>16</sub>	8 <sup>11</sup> / <sub>16</sub>	10 <sup>13</sup> / <sub>16</sub>	12 <sup>13</sup> / <sub>16</sub>	
C (Length)	<sup>3</sup> / <sub>4</sub>	<sup>3</sup> / <sub>4</sub>	1	1	1	1 <sup>1</sup> / <sub>2</sub>	
D	<sup>1</sup> / <sub>8</sub>	<sup>1</sup> / <sub>8</sub>	<sup>1</sup> / <sub>8</sub>	<sup>1</sup> / <sub>8</sub>	<sup>3</sup> / <sub>16</sub>	<sup>1</sup> / <sub>4</sub>	
E	3 <sup>13</sup> / <sub>16</sub>	4 <sup>13</sup> / <sub>16</sub>	6 <sup>15</sup> / <sub>16</sub>	9 <sup>1</sup> / <sub>16</sub>	11 <sup>3</sup> / <sub>16</sub>	13 <sup>3</sup> / <sub>16</sub>	
Weights	.75	1.0	1.5	3.0	4.0	8.5	

Dimensions are in inches. Weights are in pounds.

All weights are in pounds based on a metal density of .29 lb/in<sup>3</sup>

### Slip-on Angle Face Rings - Lightweight

Nominal Pipe Size	28	30	32	36	42	48
Pipe OD						
A (Lap Dia.)						
B (ID Bore)						
C (Length)	2	2	2	2	2	2
D	<sup>1</sup> / <sub>4</sub>	<sup>1</sup> / <sub>4</sub>	<sup>1</sup> / <sub>4</sub>	<sup>1</sup> / <sub>4</sub>	<sup>1</sup> / <sub>4</sub>	<sup>1</sup> / <sub>4</sub>
E						
Weights						