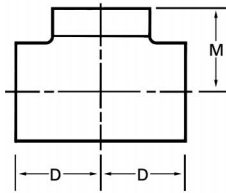
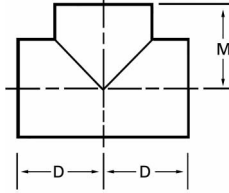


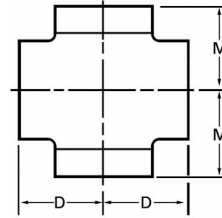
Stainless Steel Tees and Crosses



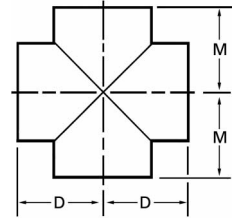
Drawn Outlets



Nozzle-Welded Outlets



Drawn Outlets



Nozzle-Welded Outlets

- Available in either the “as welded” or “annealed” condition as described more fully under smooth flow elbows on page 6.
- Alloys stocked include Types 304, 304L, 316, 316L and 317L. However, tees and crosses can normally be produced in any weldable corrosion resistant alloy.
- Non-standard sizes and dimensions are available.
- ID size tees and crosses are available.

Nominal Pipe Size	Outside Diameter	D	M
	$\frac{1}{2}$	1	1
$\frac{1}{2}$.840	1	1
	$\frac{3}{4}$	$1 \frac{1}{8}$	$1 \frac{1}{8}$
$\frac{3}{4}$	1.05	$1 \frac{1}{8}$	$1 \frac{1}{8}$
	1	$1 \frac{1}{2}$	$1 \frac{1}{2}$
1	1.31	$1 \frac{1}{2}$	$1 \frac{1}{2}$
	$1 \frac{1}{4}$	$1 \frac{7}{8}$	$1 \frac{7}{8}$
$1 \frac{1}{4}$	1.66	$1 \frac{7}{8}$	$1 \frac{7}{8}$
	$1 \frac{1}{2}$	$2 \frac{1}{4}$	$2 \frac{1}{4}$
$1 \frac{1}{2}$	1.90	$2 \frac{1}{4}$	$2 \frac{1}{4}$
	2	$2 \frac{1}{2}$	$2 \frac{1}{2}$
2	$2 \frac{3}{8}$	$2 \frac{1}{2}$	$2 \frac{1}{2}$
	$2 \frac{1}{2}$	3	3
$2 \frac{1}{2}$	$2 \frac{7}{8}$	3	3
	3	$3 \frac{3}{8}$	$3 \frac{3}{8}$
3	$3 \frac{1}{2}$	$3 \frac{3}{8}$	$3 \frac{3}{8}$
	4	$4 \frac{1}{8}$	$4 \frac{1}{8}$
4	$4 \frac{1}{2}$	$4 \frac{1}{8}$	$4 \frac{1}{8}$
	5	$4 \frac{7}{8}$	$4 \frac{7}{8}$
5	$5 \frac{9}{16}$	$4 \frac{7}{8}$	$4 \frac{7}{8}$
	6	$5 \frac{5}{8}$	$5 \frac{5}{8}$
6	$6 \frac{5}{8}$	$5 \frac{5}{8}$	$5 \frac{5}{8}$

Nominal Pipe Size	Outside Diameter	D	M
	8	7	7
8	$8 \frac{5}{8}$	7	7
	10	$8 \frac{1}{2}$	$8 \frac{1}{2}$
10	$10 \frac{3}{4}$	$8 \frac{1}{2}$	$8 \frac{1}{2}$
	12	10	10
12	$12 \frac{3}{4}$	10	10
	14	11	11
	16	12	12
	18	$13 \frac{1}{2}$	$13 \frac{1}{2}$
	20	15	15
	22	$16 \frac{1}{2}$	$16 \frac{1}{2}$
	24	17	17
	26	$19 \frac{1}{2}$	$19 \frac{1}{2}$
	28	$20 \frac{1}{2}$	$20 \frac{1}{2}$
	30	22	22
	32	$23 \frac{1}{2}$	$23 \frac{1}{2}$
	34	25	25
	36	$26 \frac{1}{2}$	$26 \frac{1}{2}$
	38	28	28
	40	$29 \frac{1}{2}$	$29 \frac{1}{2}$
	42	30	28
	48	35	33

Note: Under ANSI B16.9, for sizes 26" and larger, outlet dimension "M" is recommended but not mandatory. Dimensions are in inches.

Alloys: pg. 56, 57 Wall Thicknesses: pg. 49, 50 Tolerances: pg. 58 Specifications: pg. 54, 55 Shipping Weights: pg. 49, 50